

SHURflo®

Mini-Bulk Chemical Transfer Systems & Accessories





Shurflo **Mini-Bulk Chemical Transfer Pumps and Systems** are purpose-designed and built for Ag market professionals. Drawing on a long history of pioneering leadership in the design and manufacture of 12-volt agriculture spray pumps, and input from Ag professionals, Shurflo Mini-Bulk systems include many innovations that provide substantial user benefits.

SF-1100 PUMP FEATURES:

- Highly efficient design delivers increased flow with viscous micro encapsulated or suspended chemicals.
- High flow rate while pumping viscous chemicals, in combination with free flowing return loop, provides substantially increased turnover rate on recirculation models.
- Shurflo proprietary designed co-molded diaphragm molecularly bonds the pump piston to the diaphragm in the molding process. The result is an inherently leak proof diaphragm capable of years of trouble-free service.
- The highly efficient design utilizes a Shurflo-built 3" diameter permanent magnet motor — More performance and less weight, without more cost.
- While designed and tested to provide high performance and years of durability, the SF-1100 is field serviceable with hand tools.

FM-1100 METER FEATURES:

- Highly accurate nutating disk design.
- Large LCD display makes meter reading easy from a distance on pump mounted systems.
- Simple calibration steps and control button layout.
- Long-life lithium batteries.
- Easy-to-service electronics and batteries.
- Available in both pump-mounted and hose-end configurations.



SHURflo®

SF-1100 Recirc System

SF-1100-REC (Part# SF-1100-REC)

The SF-1100-REC system is able to be mounted to any tank with a 9-inch, threaded opening. This system is particularly useful when pumping fluids with suspended particles.

The system includes:

- SF-1100 Chemical Transfer Pump with 12 VDC Motor, 20 ft. Cable, Alligator Clips & Inline Fuse
- FM-1100i Inline Electronic Flow Meter
- 1-in. NPT x 12 ft. EPDM Discharge Hose with Ball Valve/Spout
- 3-Way Valve, Tubing and Fittings to allow Tank Recirculation





SF-1100-PTS (PART# SF-1100-PTS)

The SF-1100-PTS system comes with the FM-1100, Pump-mounted Flow Meter.



SF-1100-PTS_i (PART# SF-1100-PTS_i)

The SF-1100-PTS_i system comes with the FM-1100_i, Inline Flow Meter.

The SHURflo AG Runner™ system is ready to take anywhere. The AG Runner™ is portable, flexible and extremely versatile, especially for those that use multiple containers. The entire system is mounted in a sturdy, easy-to-carry, welded frame.

The system includes:

- SF-1100 Chemical Transfer Pump with 12 VDC Motor, 20 ft. Cable, Alligator Clips & Inline Fuse
- FM-1100 or FM-1100_i Electronic Flow Meter
- 1-in. NPT x 12 ft. EPDM Discharge Hose with Ball Valve/Spout
- 1-in. NPT x 12 ft. EPDM Inlet Hose with Elbow/Ball Valve/Fitting (1-in.) Assembly with Locking Cam Arms





SHURflo®

SF-1100 Transfer System

SF-1100-MTS (PART# SF-1100-MTS)

This system is ready to be mounted to any Monsanto Shuttle™ tank.

The system includes:

- SF-1100 Chemical Transfer Pump with 12 VDC Motor, 20 ft. Cable, Alligator Clips & Inline Fuse
- FM-1100 Pump-mounted Electronic Flow Meter
- 1-in. NPT x 12 ft. EPDM Discharge Hose with Ball Valve/Spout
- Monsanto 2-in. Fitting with Locking Cam Arms and 2-in. 90° Street Elbow

The SF-1100-MTS features a 5-Year Warranty when used with Monsanto Chemicals.





SF-1100 PUMP KIT (PART# SF-1100)

The stand-alone SF-1100 pump includes a 12 VDC motor, 20 ft. cable with alligator clips and an inline fuse. The stand-alone pump does not include any tank couplings, ball valves or mounting devices. The SF-1100 pump uses EPDM valves.



SF-1105 PUMP KIT (PART# SF-1105)

The stand-alone SF-1105 pump includes a 12 VDC motor, 20 ft. cable with alligator clips and an inline fuse. The stand-alone pump does not include any tank couplings, ball valves or mounting devices. The SF-1105 pump uses Viton® valves.

FM-1100 PUMP-MOUNTED METER KIT (PART# FM-1100)

The FM-1100 is the complete Pump-mounted Electronic Flow Meter assembly, including batteries. The meter is ready to mount to the pump.



FM-1100i INLINE METER KIT (PART# FM-1100i)

The FM-1100i is the complete Inline Electronic Flow Meter assembly, including batteries. The meter is ready to install.





90° ELBOW FITTING KIT **(PART# 94-712-00)**

The 94-712-00 is a replacement 2-in. street elbow. Fitting has 2-in. male NPT threads on one side and 2-in. female NPT threads on the other.



MONSANTO LEVER COUPLING KIT **(PART# 94-713-00)**

The 94-713-00 is a replacement female Monsanto bayonet coupling for use on the SF-1100-MTS. This fitting has 2-in. NPT threads for mounting to a standard 2-in. street elbow.



BALL VALVE / SPOUT KIT **(PART# 94-716-00)**

The 94-716-00 is a replacement 1-in. NPT ball valve with spout.



DISCHARGE HOSE KIT **(PART# 94-717-00)**

The 94-717-00 is a replacement 1-in. NPT x 12 ft. EPDM hose.



MOTOR ASSEMBLY KIT

(PART# 94-718-00)

The 94-718-00 is the motor assembly used in any SF-1100 Series Pump

The Motor Assembly Kit includes:

- 12 VDC Motor with 20 ft. Cable, Alligator Clips & Inline Fuse
- Integrated Pump Lower Housing
- Built-in On-Off Switch



DIAPHRAGM/LOWER HOUSING/ DRIVE ASSEMBLY KIT (PART# 94-719-00)

The 94-719-00 is a replacement Diaphragm/Lower Housing/Drive Assembly ready for installation.



EPDM VALVE HOUSING KIT

(PART# 94-720-00)

The 94-720-00 is a replacement Valve Housing which includes a complete, fully assembled valve housing ready for installation. The O-ring Seal is also included. The 94-720-00 uses EPDM Valves.

Manufacturer recommends replacing the O-ring Seal whenever the pump has been taken apart.



VITON® VALVE HOUSING KIT

(PART# 94-720-05)

The 94-720-05 is a replacement Valve Housing which includes a complete, fully assembled valve housing ready for installation. The O-ring Seal is also included. The 94-720-05 uses Viton® Valves.

Manufacturer recommends replacing the O-ring Seal whenever the pump has been taken apart.



PUMP HOUSING KIT (PART# 94-721-00)

The 94-721-00 is a replacement Polypropylene Upper Housing which includes the O-ring Seal and Pump Head Screws.

Manufacturer recommends replacing the O-ring Seal whenever the pump has been taken apart.



COUPLING GASKET KIT (PART# 94-722-00)

The 94-722-00 is a replacement rubber gasket for the Monsanto 2-in. lever coupling.



ALLIGATOR CLIPS/FUSE KIT (PART# 94-723-00)

The 94-723-00 is a replacement set of red and black alligator clips, including a fuse holder.



RECIRC LID KIT (PART# 94-724-00)

The 94-724-00 is a replacement lid for the Mini-Bulk Chemical Recirculation system.



RECIRC CAP KIT (PART# 94-725-00)

The 94-725-00 is a replacement cap for the Mini-Bulk Chemical Recirculation system.



FM-1100 SERIES METER ELECTRONICS KIT (PART# 94-732-00)

The 94-732-00 Flow Meter Electronics kit includes the Front Cover Assembly and the Electronic Display including O-ring and Batteries. The Electronics Kit will fit both the Pump-mounted and Inline Meters.



FM-1100 SERIES METER HOUSING SEAL COVER KIT (PART# 94-733-00)

The 94-733-00 Flow Meter Housing Seal Cover kit includes the Seal Cover, O-ring and Screws. The Flow Meter Housing Seal Cover will fit both the Pump-mounted and Inline Meters.



FM-1100 SERIES METER NUTATING CHAMBER ASSEMBLY KIT (PART# 94-734-00)

The 94-734-00 is a replacement Nutating Chamber Assembly which includes the O-ring Seal. The Nutating Chamber Assembly Kit will fit both the Pump-mounted and Inline Meters.





FM-1100 METER HOUSING KIT (90°) (PART# 94-735-00)

The 94-735-00 is a replacement 90° Meter Housing which includes the O-ring Seal.



FM-1100i INLINE METER HOUSING KIT (PART# 94-736-00)

The 94-736-00 is a replacement Inline Meter Housing which includes the O-ring Seal.



RECIRC SYSTEM RETURN HOSE KIT (PART# 94-737-00)

The Recirc System Return Hose Kit includes the Return Hose and two Hose Clamps.



ELBOW/VALVE/COUPLING KIT (PART# 94-738-00)

The 94-738-00 is a replacement Elbow/Valve/ Coupling assembly, which includes a 1-in. Street Elbow, 1-in. Ball Valve and a 1-in. Bayonet Tank Coupling.



SF-1100 DISPENSING PUMP KITS

SF-1100 KITS LIST: (See Figure #1)

ITEM	KIT PART NO.	DESCRIPTION
(1)	94-718-00	Motor Assembly Kit
(2)	94-719-00	Diaphragm/Lower Housing/Drive Assembly Kit
(3a)	94-720-00	Valve Housing Assembly Kit (EPDM)
(3b)	94-720-05	Valve Housing Assembly Kit (Viton®)
(4)	94-721-00	Upper Housing Assembly Kit

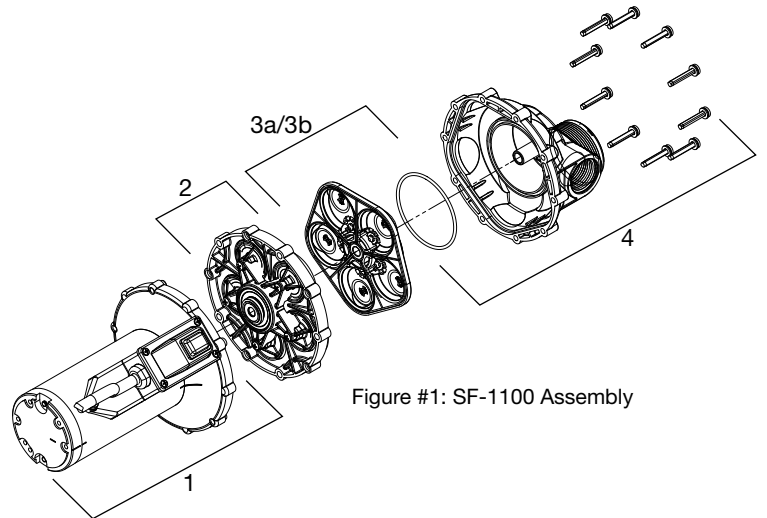


Figure #1: SF-1100 Assembly

FM-1100 & FM-1100i ELECTRONIC FLOW METER KITS

FM-1100 / FM-1100i KITS LIST (See Figure #2)

ITEM	KIT PART NO.	DESCRIPTION
(1)	94-732-00	Electronic Assembly Kit
(2)	94-733-00	Meter Housing Seal Cover Kit
(3)	94-734-00	Nutating Chamber Assembly Kit
(4a)	94-735-00	90-Degree Meter Housing Kit
(4b)	94-736-00	Inline Meter Housing Kit

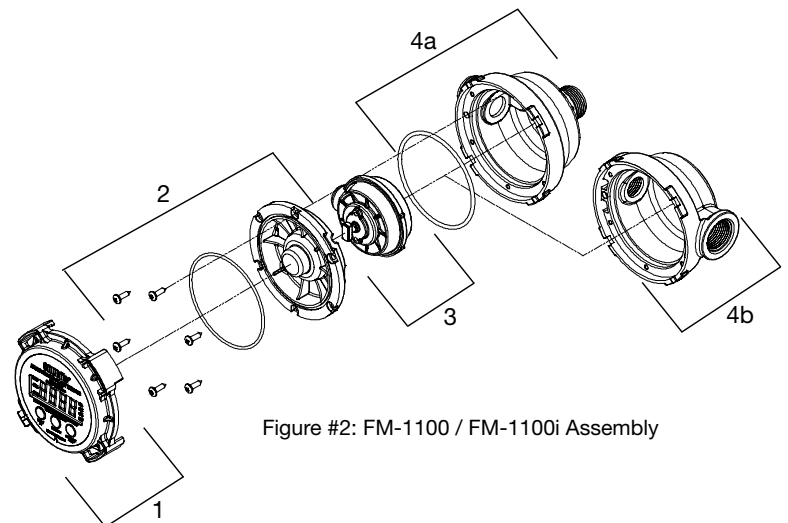


Figure #2: FM-1100 / FM-1100i Assembly



SHURflo[®]

Notes





SHURflo®

Notes





SHURflo[®]

Notes





*ISO Certified Facility

SHURflo[®]

SHURflo Headquarters*

5900 Katella Ave.
Cypress, CA 90630
Tel: (800) 854-3218
(562) 795-5200
Fax: (562) 795-7554

SHURflo East

52748 Park Six Court
Elkhart, IN 46514-5427
Tel: (800) 762-8094
(574) 262-0478
Fax: (574) 264-2169

Europe

SHURflo Limited

Unit 5 Sterling Park
Gatwick Road, Crawley
West Sussex, RH10 2QT, UK
Tel: 44-(0) 1293-424000
Fax: 44-(0) 1293-421880

www.shurflo.com