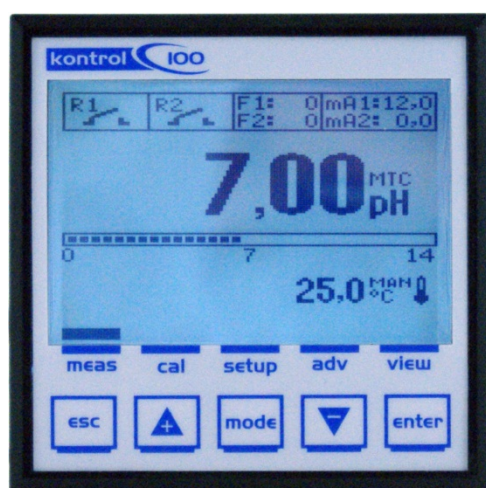


# Kontrol 100

Control Instruments



# Kontrol 100



## Kontrol 100

### Single-parameter control instrument

The Kontrol 100-series are advanced controllers designed for simpler high-end applications. The units feature an independent proportional control output, probe quality checking and a variety of outputs. The user has full programming authority.

### Parameters

- pH / ORP
- Conductivity
- Flow Rate
- Chlorine
- Per Acetic Acid
- Hydrogen Peroxide
- Custom Measure for 4÷20mA input

### Applications

- Waste Water
- Drinking Water
- Pure Water
- Cooling Towers
- Boiler
- Reverse Osmosis
- Crate Wash
- Galvanic Process
- CIP
- Irrigation
- Swimming Pool
- Dairy

### Features

**Serial Port RS485 insulated with Modbus RTU/Ascii Protocol**

**Graphic display 128 by 128 pixel resolution**  
monochrome display with graphic icons to show digital output status, washing cycle, alarms menu.

**Simultaneous flashing values** for the measurement (numeric + bargraph) and temperature readings.

**Five control keys** for instrument calibration and configuration.

#### Enclosure Box

**Wall mounting** ABS

plastic material IP65 full box (144x144x122)

**Panel mounting** ABS

IP65 front panel only (96x96x42)

#### Power Supply

**Universal Power Supply** 100-240 Vac 50/60 Hz

**Low Power Supply** 12-32Vdc or 24 Vac

**CE compliant**

#### Configuration Outputs

All outputs Relay, SSR and Output mA are configurable with primary and secondary measure.

## Current outputs 4÷20mA

### Galvanic isolation

**Two** independent programmable Output Measures with Proportional routine regulation.

## Relay Outputs

**Two** independent relays, two set points, alarm remote and back washing probe setting by software.

On/OFF, Timed routine function setting.

## Solid State Relay (SSR)

**Two** Frequency output signal, two set points with Proportional routine regulation.

## Service Maintenance Timer

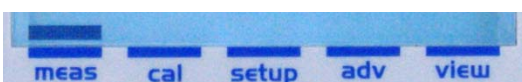
One countdown timer to show a periodical maintenance service alarm.

## Reverse Display function

Invert the writings on the display to obtain a high contrast.

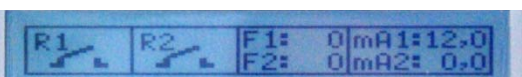
## Toolbar menu

The user-friendly programming step Menu by Toolbar functions.



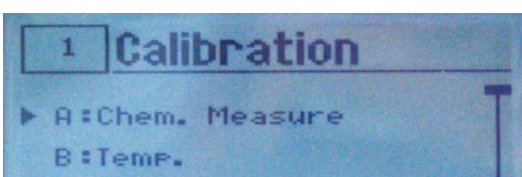
## Outputs Status bar

Quick information thanks to Status bar in real time.



## Index menu

The user-friendly navigation thanks to index menu



## Measure Range

Code	Description	Accuracy
pH	0 ÷ 14,00 pH	±0,01pH
ORP	± 2000 mV	±1 mV
Conductivity	0,054÷200.000 µS(1*)	±2%(2*)
Flow Rate:	0,0000÷99.999 Liters/Sec.(3*)	±0,5Hz(2*)
Input 4÷20mA (5*)	0,0000÷99.999 ppm(4*)	±0,01ppm
Temperature	-50÷150°C (-58÷302 °F ±0,4°F )	±0,2°C
with PT100/PT1000		

(1\*) Setting by software following unit measures: µS, mS, KΩ, M Ω, ppm, ppb

(2\*) accuracy of measuring point

(3\*) Setting by software following unit measures: l/s, l/m, l/h, m³/h, GPM.

(4\*) Setting by software following measures: CL, PAA, H2O2 or Custom

(5\*) Setting by software following unit measures: ppm, ppb, mg/l, mA or Custom

## Product line

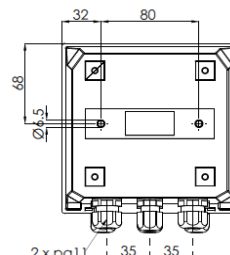
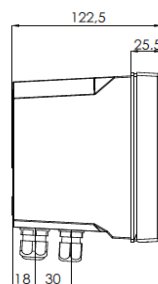
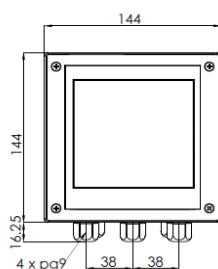
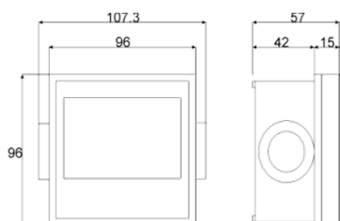
Code	Model	Description
K100PR	Kontrol 100	for pH/ORP values
K100CD	Kontrol 100	for Conductivity value
K100FX	Kontrol 100	for Flow Rate value
K100MP	Kontrol 100	for CL, PAA, H2O2 or custom

## Multi-Color Backlight Function

Four different Backlight color to underline functions.



## Mechanical Dimension

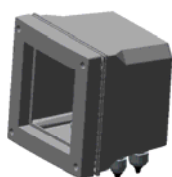


## Accessory Box 144x144

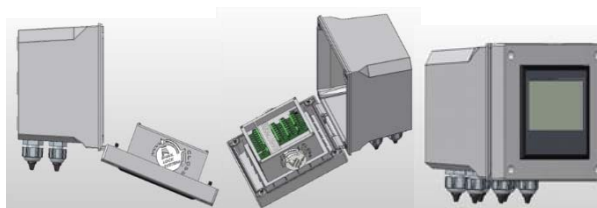
Three step to have IP65 Full box



+



=



## Snail Lock fixing system

Quick connection for panel mounting version.



For more information

[www.seko.com](http://www.seko.com)



Innovation > Technology > Future