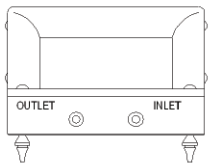
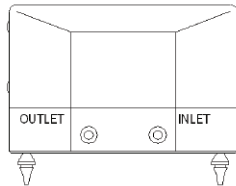


LD Series

Oil-Free Linear Diaphragm Pumps

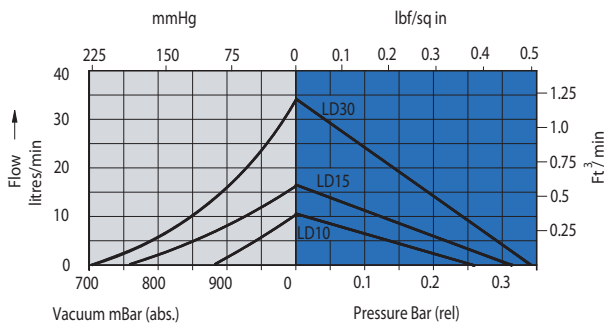


LD10
Single ended OEM model



LD15 & LD30
Single ended OEM model

LD10, LD15 & LD30



Flow @
10 - 30 l/min
Vacuum
700 mbar
Pressure
0.3 bar

Contamination free pumping

The simple yet efficient pumping principle uses an electro magnetically operated diaphragm, which eliminates sliding parts keeping wear and tear minimal. This oil-free principle produces a smooth pulse free flow at a low pressure. All models are supplied with an inlet and outlet for vacuum and pressure use.

Reliable, quiet and efficient

Designed for continuous duty the LD series is housed in a robust alloy casing with exceptional output from a small foot print. Efficient in operation the LD series offers low power consumption and life testing in excess of 14,000 hours.

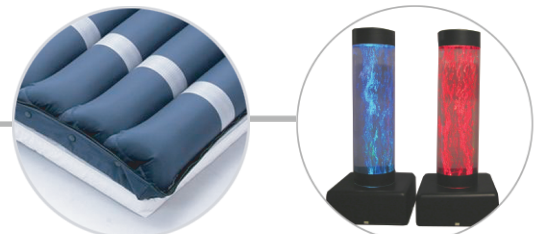
Easy OEM installation

Designed for easy OEM installation the LD series is lightweight and compact with quick fit anti vibration mounts requiring no tools. A range of models are available from 10 to 30l/min. Products also carry CE Marking.

Application ideas

Application ideas include ripple beds, air splints, dehumidifiers, massage chairs, fragrance dispense, and air sampling.

LD Applications



LD Series

Technical Specifications

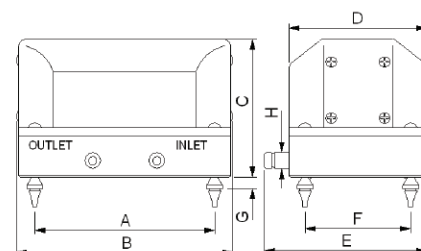
motor details

Electromagnetic vibrating linear motor

model no	power consumption w	noise level dB
LD10	8	44
LD15	10	46
LD30	20	50

dimensions

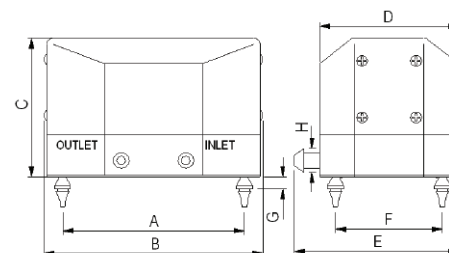
LD10 dimensions mm



performance

model no	flow (l/min) @ 0.05 bar pressure	max vacuum (mbar)	max pressure (bar)
LD10	8	880	0.25
LD15	15	760	0.30
LD30	28	700	0.30

LD15 & LD30



connectors

LD10 - 8.0 mm barbed
LD15 - 8.0 mm straight
LD30 - 8.0 mm barbed

model	A	B	C	D	E	F	G	H
LD10	60	97	59	68	77	45	7.5	8
LD15	80	107	68	78	85	45	5.8	7.8
LD30	83	130	80	99	109	60	7	8.5

Please note that it is important that you ensure the motor specification stated and the range of materials offered in the pump are compatible with the performance, environmental limitations and chemical resistance of the application

For further information or details of our extensive range of diaphragm pumps, contact our technical sales who will be pleased to help you select the most suitable pump for your application.

S30-257/1